



ARRIS
STUDIO ARCHITECTS

ADDRESS
1327 ARCHER STREET, SUITE 220
SAN LUIS OBISPO, CA 93401
CONTACT
805.547.2240
ARRIS-STUDIO.COM
THOMAS E. JESS ARCHITECT #27408
STEPHEN A. RIGOR ARCHITECT #C33672
ARCHITECT OF RECORD



A PROJECT FOR:
NX VENTURES
2343 STUART STREET
BERKELEY, CA 94704
510.692.2994
NX-VENTURES.COM

THE BERKELEY COLLECTION
COMMERCIAL | HOTEL | RESIDENTIAL
2801 ADELINE ST. & 2900 SHATTUCK AVE., BERKELEY, CA
SITE #2: 2900-2920 SHATTUCK AVE.
CONCEPTUAL PERSPECTIVE VIEW

VICINITY MAP



CONCEPTUAL PERSPECTIVE VIEW - CORNER VIEW @ SHATTUCK AVENUE + RUSSELL STREET

DATE
JUNE 9, 2021
ARRIS PROJECT #
A19103
CITY OF BERKELEY APPLICATION #
ZP2020-0118
SHEET #

A3.41



CONCEPTUAL PERSPECTIVE VIEW - VIEW ALONG RUSSELL STREET

ARRIS
STUDIO ARCHITECTS

ADDRESS
1327 ARCHER STREET, SUITE 220
SAN LUIS OBISPO, CA 93401

CONTACT
805.547.2240
ARRIS-STUDIO.COM

THOMAS E. JESS ARCHITECT #27608
STEPHEN A. RIGOR ARCHITECT #C33672
ARCHITECT OF RECORD



A PROJECT FOR:
NX VENTURES
2343 STUART STREET
BERKELEY, CA 94704
510.692.2994
NX-VENTURES.COM

THE BERKELEY COLLECTION
COMMERCIAL | HOTEL | RESIDENTIAL
2801 ADELINE ST. & 2900 SHATTUCK AVE., BERKELEY, CA

SITE #2: 2900-2920 SHATTUCK AVE.
CONCEPTUAL PERSPECTIVE VIEW

VICINITY MAP



DATE
JUNE 9, 2021
ARRIS PROJECT #
A19103
CITY OF BERKELEY APPLICATION #
ZP2020-0118
SHEET #

A3.42



S-1 T-1 T-1 M-1 P-1 M-2 P-2

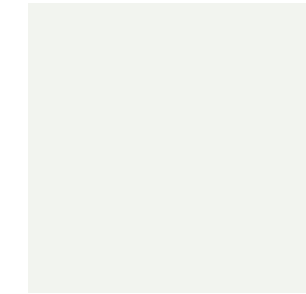
COLOR AND MATERIAL BOARD

DOORS AND WINDOWS



T-1
ALUMINUM DARK BRONZE

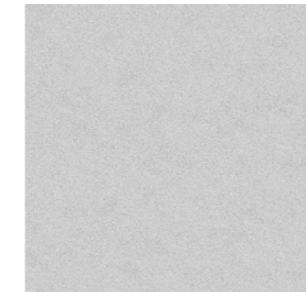
STUCCO PAINT COLORS



P-1
BENJAMIN MOORE
"DISTANT GREY"
2124-70



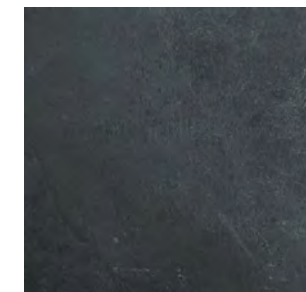
P-2
BENJAMIN MOORE
"OVERCOAT"
CC-544"



S-1
SMOOTH FINISH STUCCO
DECORATIVE WALL FINISH



M-1
TEXTURED WALL PANELS



M-2
GRANITE DARK GRAY
EXTERIOR TILE PANELING



ADDRESS
1327 ARCHER STREET, SUITE 220
SAN LUIS OBISPO, CA 93401
CONTACT
805.547.2240
ARRIS-STUDIO.COM
THOMAS E. JESS ARCHITECT #27608
STEPHEN A. RIGOR ARCHITECT #C33672
ARCHITECT OF RECORD



A PROJECT FOR:
NX VENTURES
2343 STUART STREET
BERKELEY, CA 94704
510.692.2994
NX-VENTURES.COM

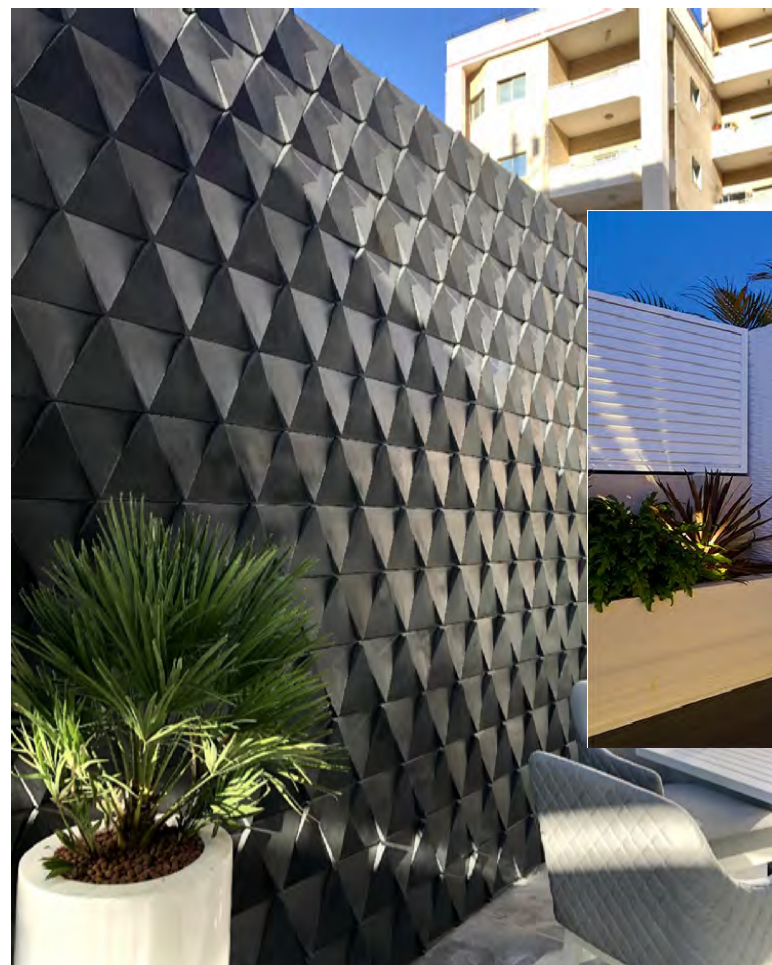
THE BERKELEY COLLECTION
COMMERCIAL | HOTEL | RESIDENTIAL
2801 ADELIN ST. & 2900 SHATTUCK AVE., BERKELEY, CA
SITE #2: 2900-2920 SHATTUCK
COLOR & MATERIAL BOARD

DATE
JUNE 9, 2021
ARRIS PROJECT #
A19103
CITY OF BERKELEY APPLICATION #
ZP2020-0118
SHEET #

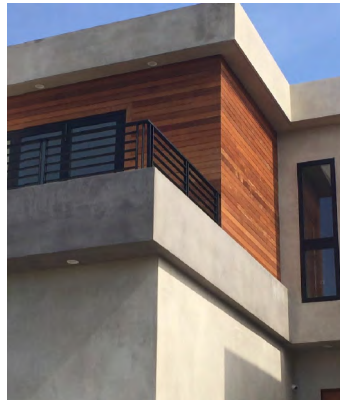
A3.50



EXTERIOR TILE / PANELING



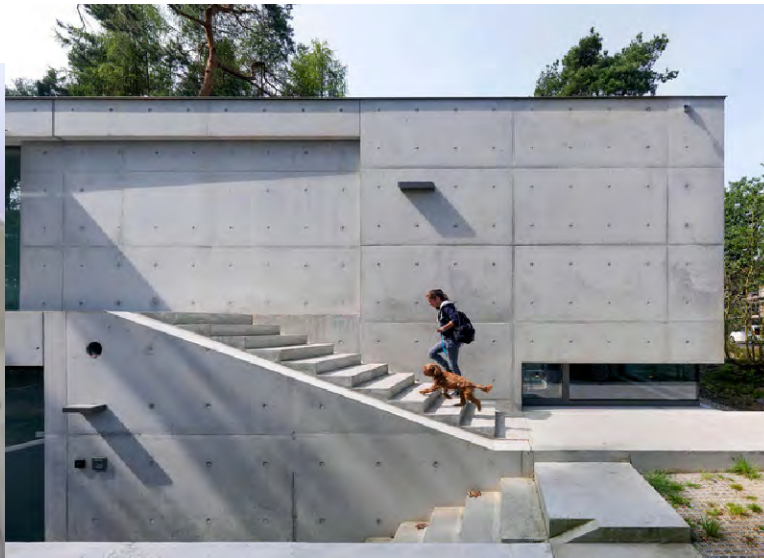
TEXTURED WALL PANELS



SMOOTH FINISH EXTERIOR STUCCO



ARCHITECTURAL CONCRETE



MATERIAL APPLICATION EXAMPLES



ADDRESS
1327 ARCHER STREET, SUITE 220
SAN LUIS OBISPO, CA 93401
CONTACT
805.547.2240
ARRIS-STUDIO.COM
THOMAS E. JESS ARCHITECT #27608
STEPHEN A. RIGOR ARCHITECT #C33672
ARCHITECT OF RECORD



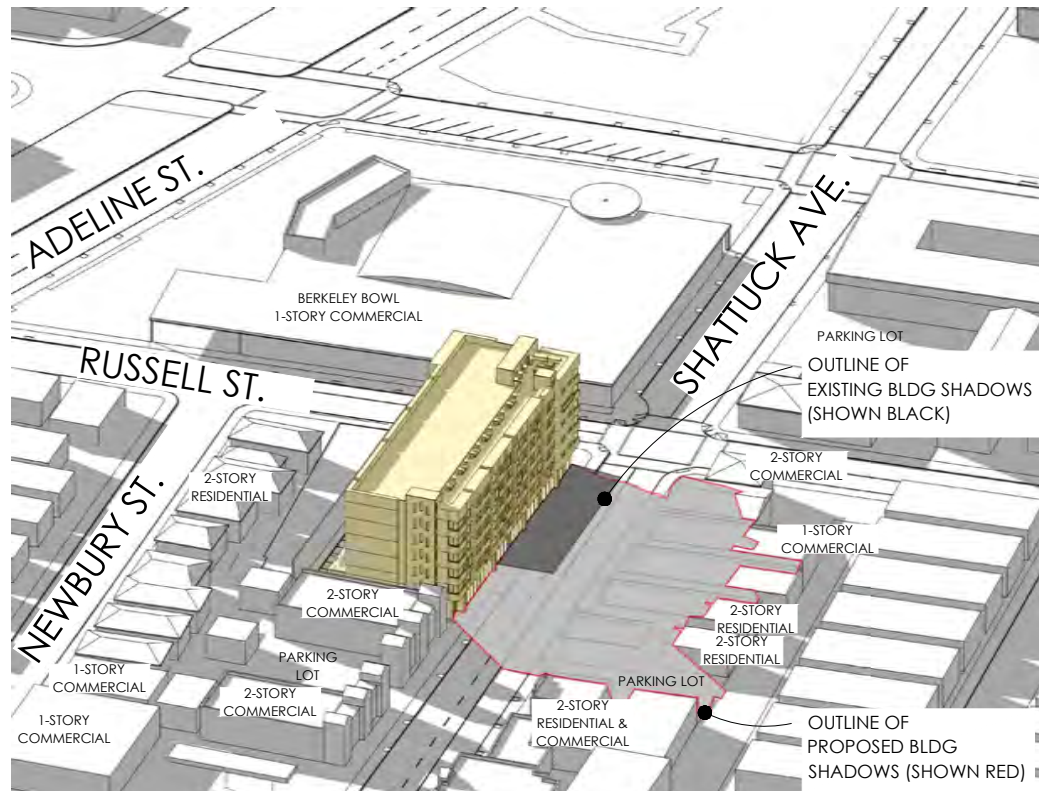
A PROJECT FOR:
NX VENTURES
2343 STUART STREET
BERKELEY, CA 94704
510.692.2994
NX-VENTURES.COM

THE BERKELEY COLLECTION
COMMERCIAL | HOTEL | RESIDENTIAL
2801 ADELIN ST. & 2900 SHATTUCK AVE., BERKELEY, CA

SITE #2: 2900-2920 SHATTUCK
MATERIAL EXAMPLES

DATE
JUNE 9, 2021
ARRIS PROJECT #
A19103
CITY OF BERKELEY APPLICATION #
ZP2020-0118
SHEET #

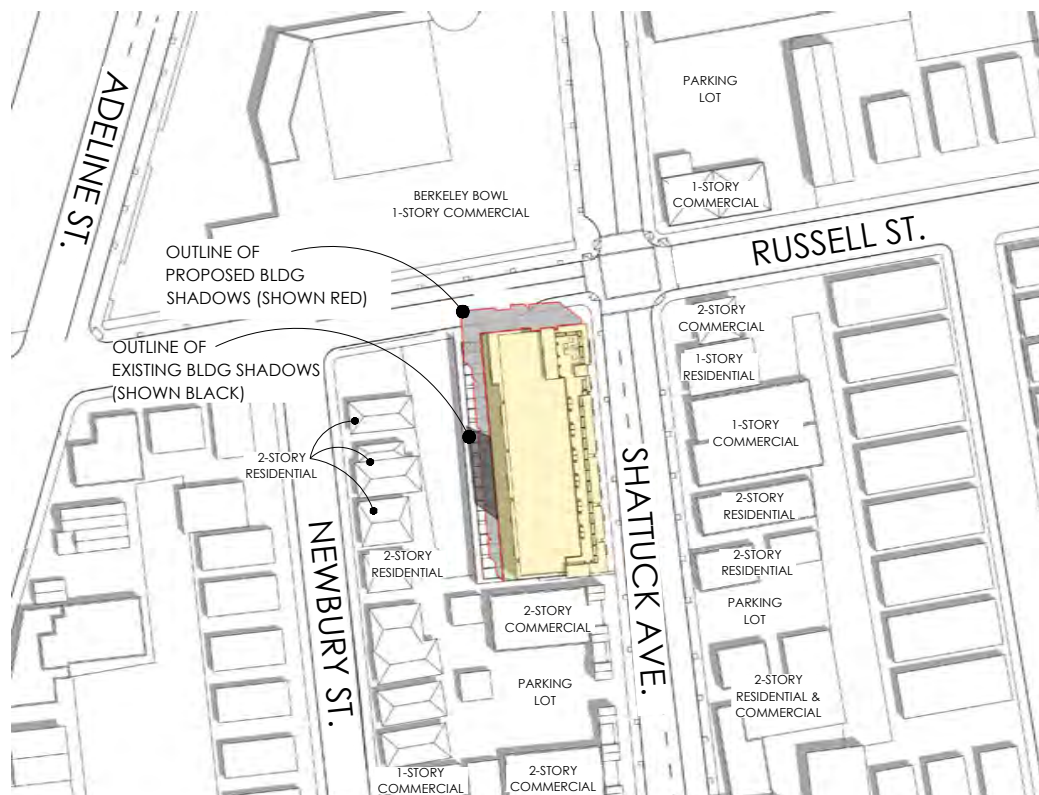
A3.51



SHADOW STUDY-JUNE 21: 2HRS BEFORE SUNSET



SHADOW STUDY-JUNE 21: 2 HRS AFTER SUNRISE



SHADOW STUDY-JUNE 21 AT NOON



SHADOW STUDY-JUNE 21: 2 HRS BEFORE SUNSET

VICINITY MAP



ADDRESS
1327 ARCHER STREET, SUITE 220
SAN LUIS OBISPO, CA 93401
CONTACT
805.547.2240
ARRIS-STUDIO.COM
THOMAS E. JESS ARCHITECT #27608
STEPHEN A. RIGOR ARCHITECT #C33672
ARCHITECT OF RECORD

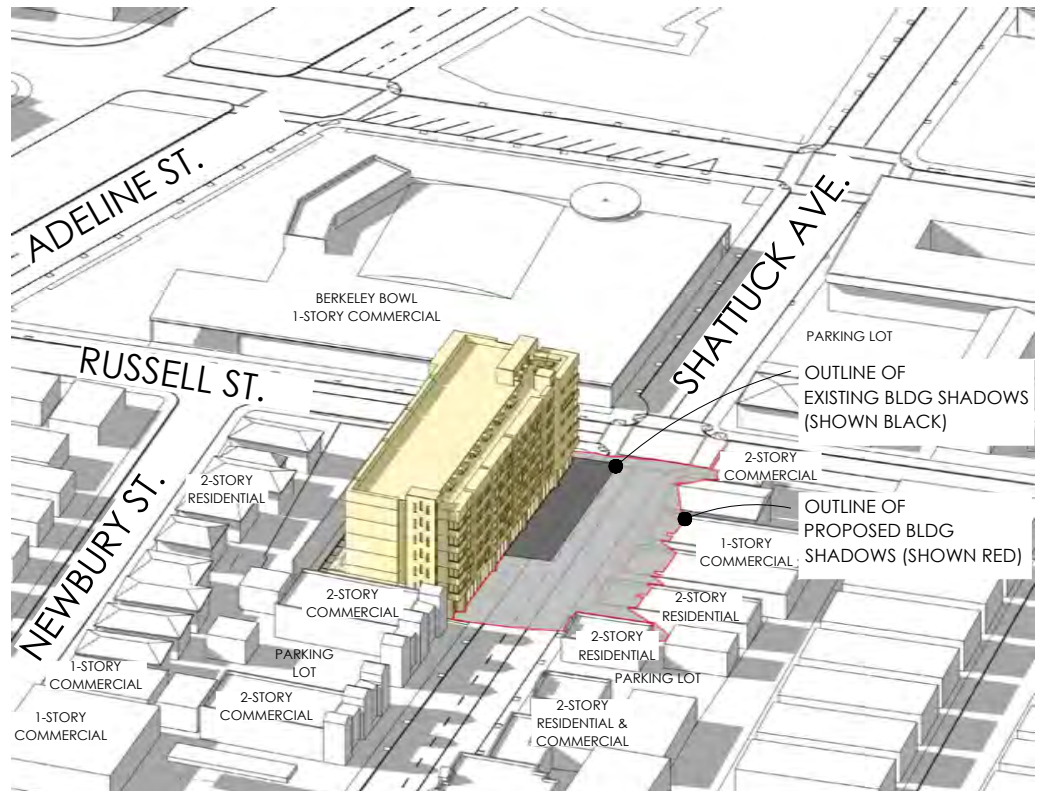


A PROJECT FOR:
NX VENTURES
2343 STUART STREET
BERKELEY, CA 94704
510.692.2994
NX-VENTURES.COM

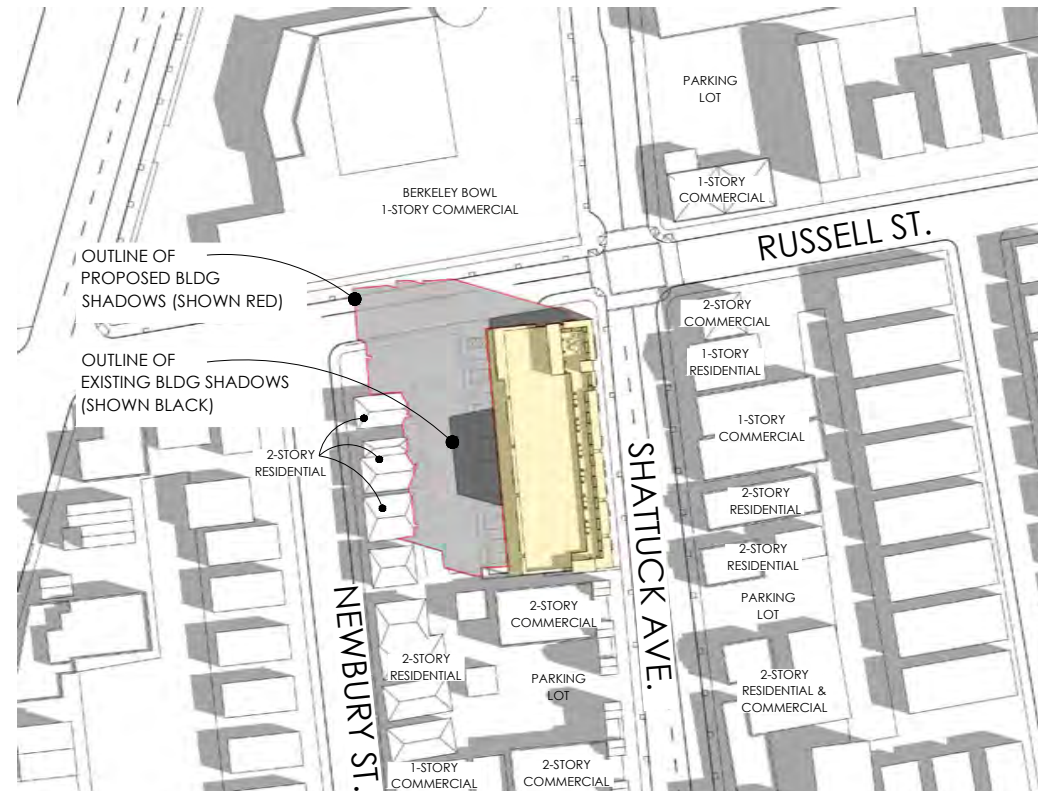
THE BERKELEY COLLECTION
COMMERCIAL | HOTEL | RESIDENTIAL
2801 ADELINE ST. & 2900 SHATTUCK AVE., BERKELEY, CA
PROJECT NORTH
TRUE NORTH
1" = 150'
11x17 SHEET SCALE: 1" = 150'
SITE #2: 2900-2920 SHATTUCK
SUN & SHADOW STUDY: JUNE 21ST

DATE
JUNE 9, 2021
ARRIS PROJECT #
A19103
CITY OF BERKELEY APPLICATION #
ZP2020-0118
SHEET #

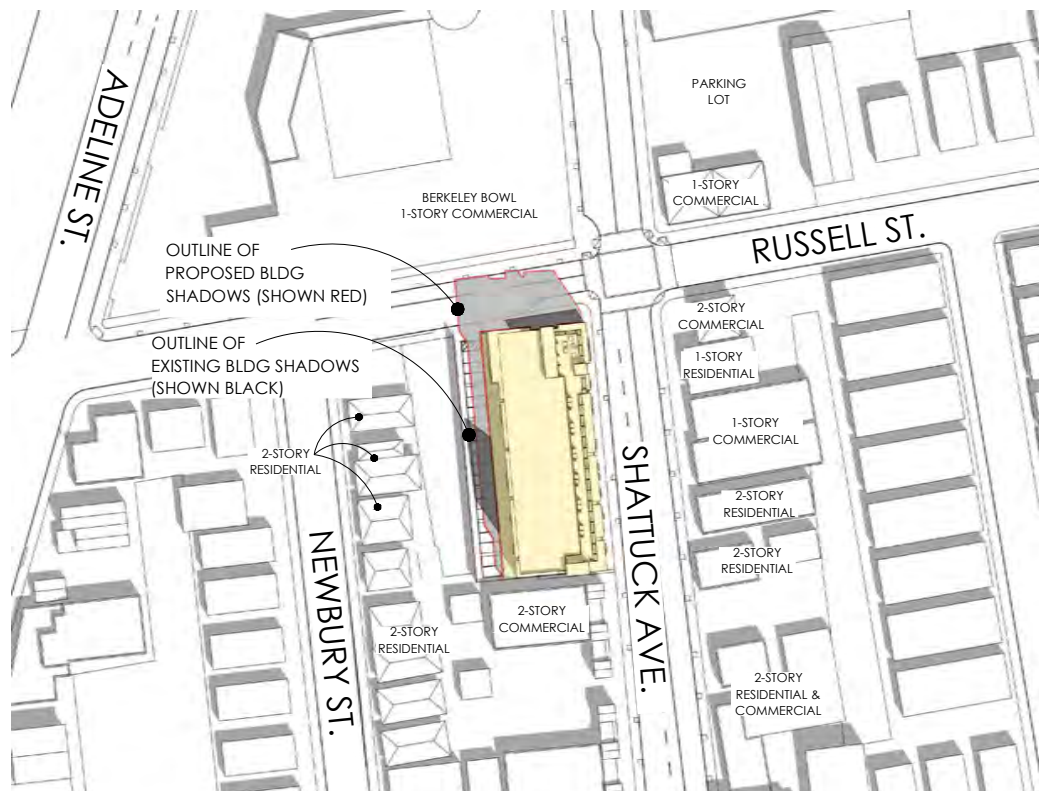
A3.60



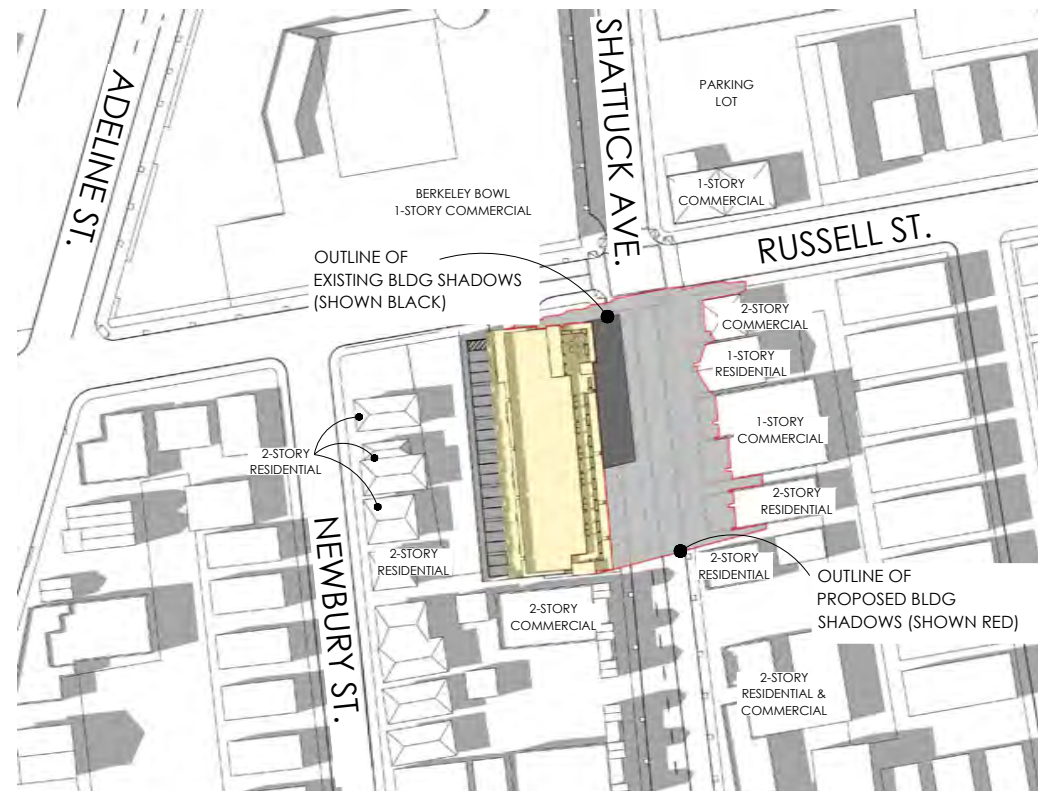
SHADOW STUDY-SEPT. 1ST: 2HRS BEFORE SUNSET



SHADOW STUDY-SEPT. 1ST: 2 HRS AFTER SUNRISE

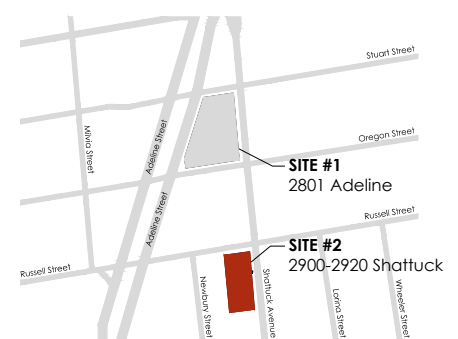


SHADOW STUDY-SEPT. 1ST AT NOON



SHADOW STUDY-SEPT. 1ST: 2 HRS BEFORE SUNSET

VICINITY MAP



ADDRESS
1327 ARCHER STREET, SUITE 220
SAN LUIS OBISPO, CA 93401
CONTACT
805.547.2240
ARRIS-STUDIO.COM
THOMAS E. JESS ARCHITECT #27608
STEPHEN A. RIGOR ARCHITECT #C33672
ARCHITECT OF RECORD

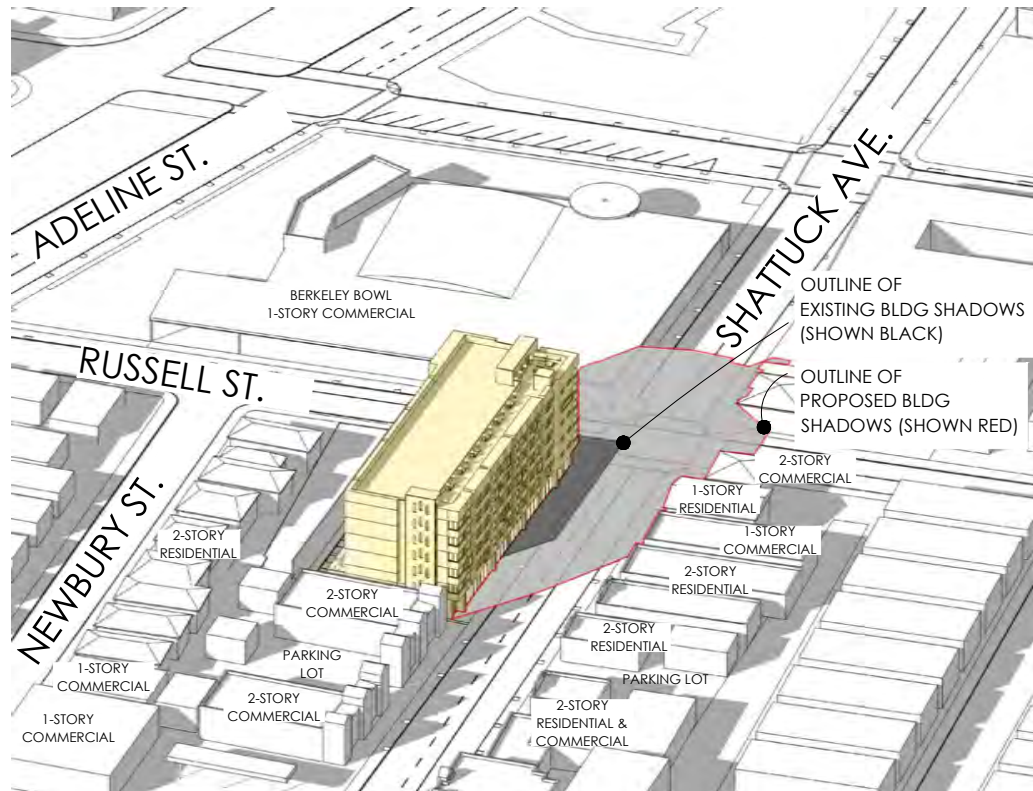


A PROJECT FOR:
NX VENTURES
2343 STUART STREET
BERKELEY, CA 94704
510.692.2994
NX-VENTURES.COM

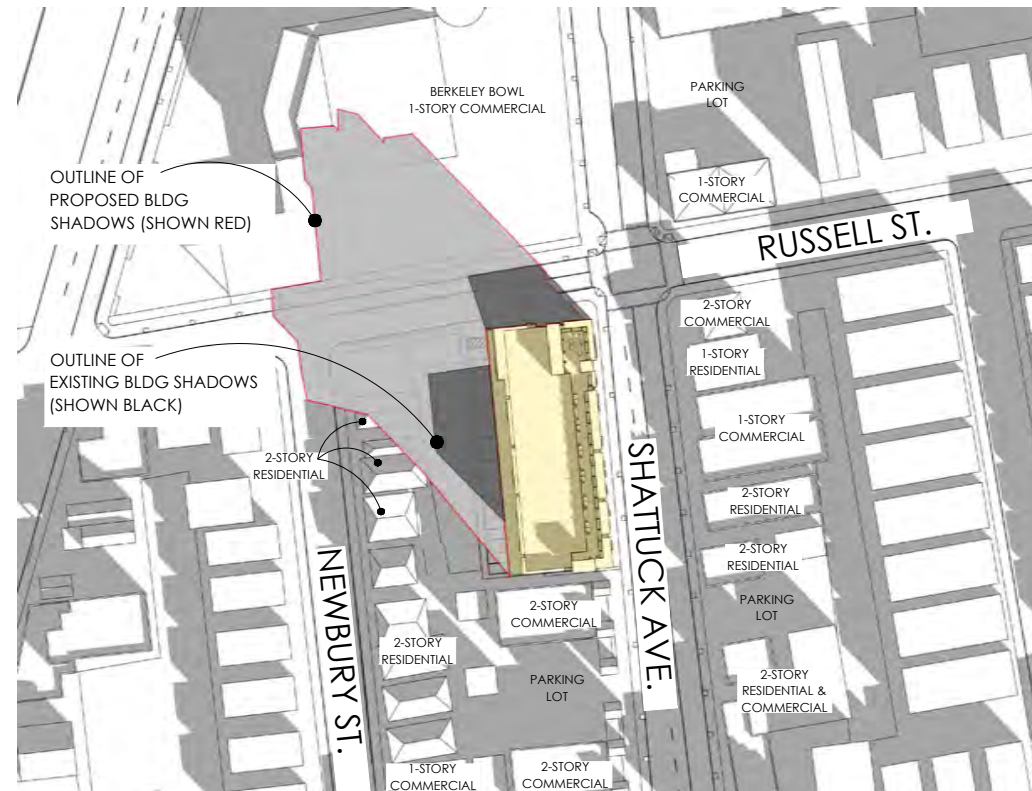
THE BERKELEY COLLECTION
COMMERCIAL | HOTEL | RESIDENTIAL
2801 ADELINE ST. & 2900 SHATTUCK AVE., BERKELEY, CA
PROJECT NORTH
TRUE NORTH
1" = 150'
11x17 SHEET SCALE: 1" = 150'
SITE #2: 2900-2920 SHATTUCK
SUN & SHADOW STUDY: SEPT 21ST

DATE
JUNE 9, 2021
ARRIS PROJECT #
A19103
CITY OF BERKELEY APPLICATION #
ZP2020-0118
SHEET #

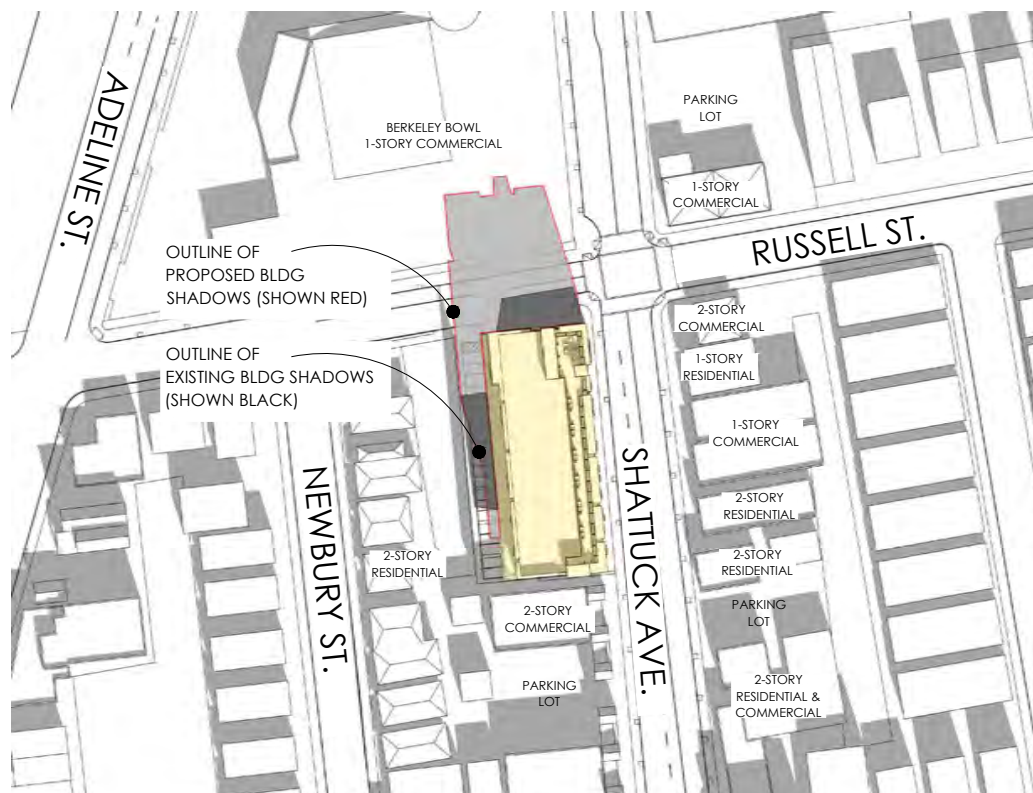
A3.61



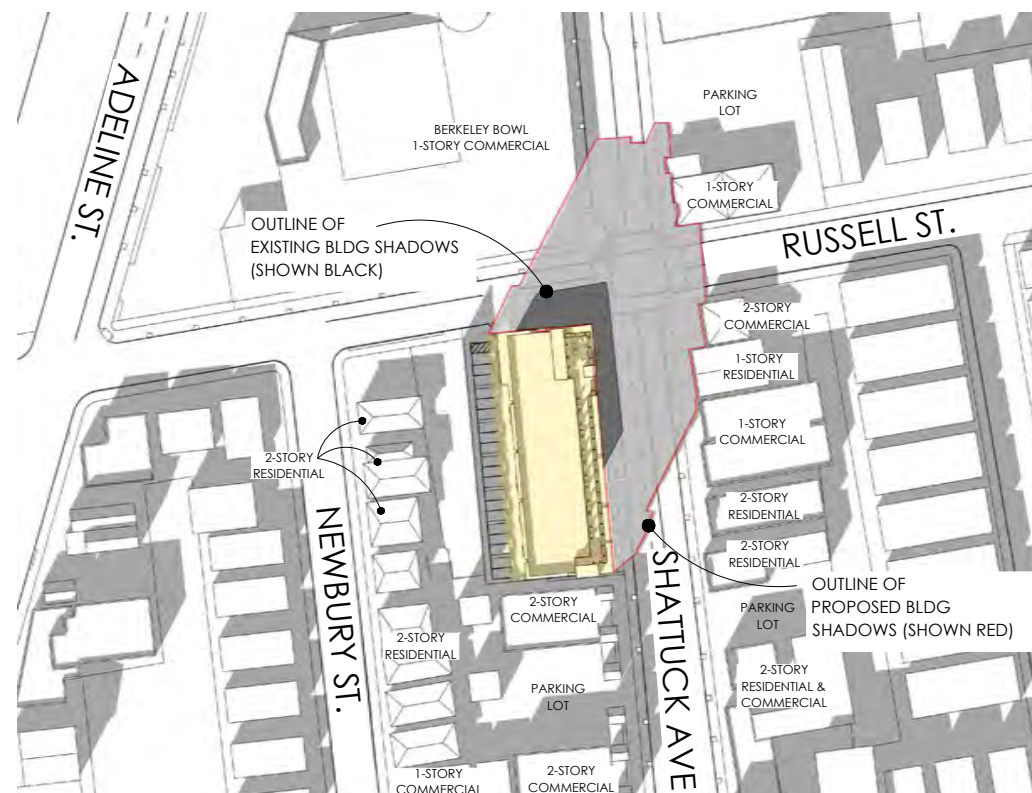
SHADOW STUDY-DEC 21: 2HRS BEFORE SUNSET



SHADOW STUDY-DEC 21: 2 HRS AFTER SUNRISE



SHADOW STUDY-DEC 21 AT NOON



SHADOW STUDY-DEC. 21: 2 HRS BEFORE SUNSET

VICINITY MAP



ARRIS
STUDIO ARCHITECTS

ADDRESS
1327 ARCHER STREET, SUITE 220
SAN LUIS OBISPO, CA 93401

CONTACT
805.547.2240
ARRIS-STUDIO.COM

THOMAS E. JESS ARCHITECT #27408
STEPHEN A. RIGOR ARCHITECT #C33672

ARCHITECT OF RECORD

Licensed Architect
Stephen A. Rigor
License #C-33672
Expires 12/2023
State of California

A PROJECT FOR:
NX VENTURES
2343 STUART STREET
BERKELEY, CA 94704
510.692.2994
NX-VENTURES.COM

THE BERKELEY COLLECTION
COMMERCIAL | HOTEL | RESIDENTIAL
2801 ADELINE ST. & 2900 SHATTUCK AVE., BERKELEY, CA

PROJECT NORTH

TRUE NORTH

0 20 40 60 80 100 FEET
1" = 150'

SITE #2: 2900-2920 SHATTUCK
SUN & SHADOW STUDY: DEC. 21ST

DATE
JUNE 9, 2021

ARRIS PROJECT #
A19103

CITY OF BERKELEY APPLICATION #
ZP2020-0118

SHEET #
A3.62

LANDSCAPE NOTES

THE TREES AND SHRUBS DISPLAYED ON THIS PLAN ARE FOR REFERENCE ONLY. THE INTENT IS TO ENSURE THE LANDSCAPE ARCHITECT INCLUDES TREES AND SHRUBS THAT MEET THE REQUIREMENT FROM THE SPECIFIC PLAN AND THE CITY OF BERKELEY PLANNING REQUIREMENTS



SMALL/MEDIUM DECIDUOUS TREES: 5-GALLON MIN IN SIZE.



SMALL/MEDIUM ACCENT TREES: 15-GALLON MIN. IN SIZE



FRONTAGE TREES



SCREENING SHRUBS & COLORFUL PERENNIALS: COMBINATION OF 32" TO 42" TALL SHRUBS AND BERMED LANDSCAPING TO PROVIDE SCREENING OF PAVED PARKING AREAS FROM THE STREET.

LANDSCAPE LEGEND

LANDSCAPE AREA CALCULATION

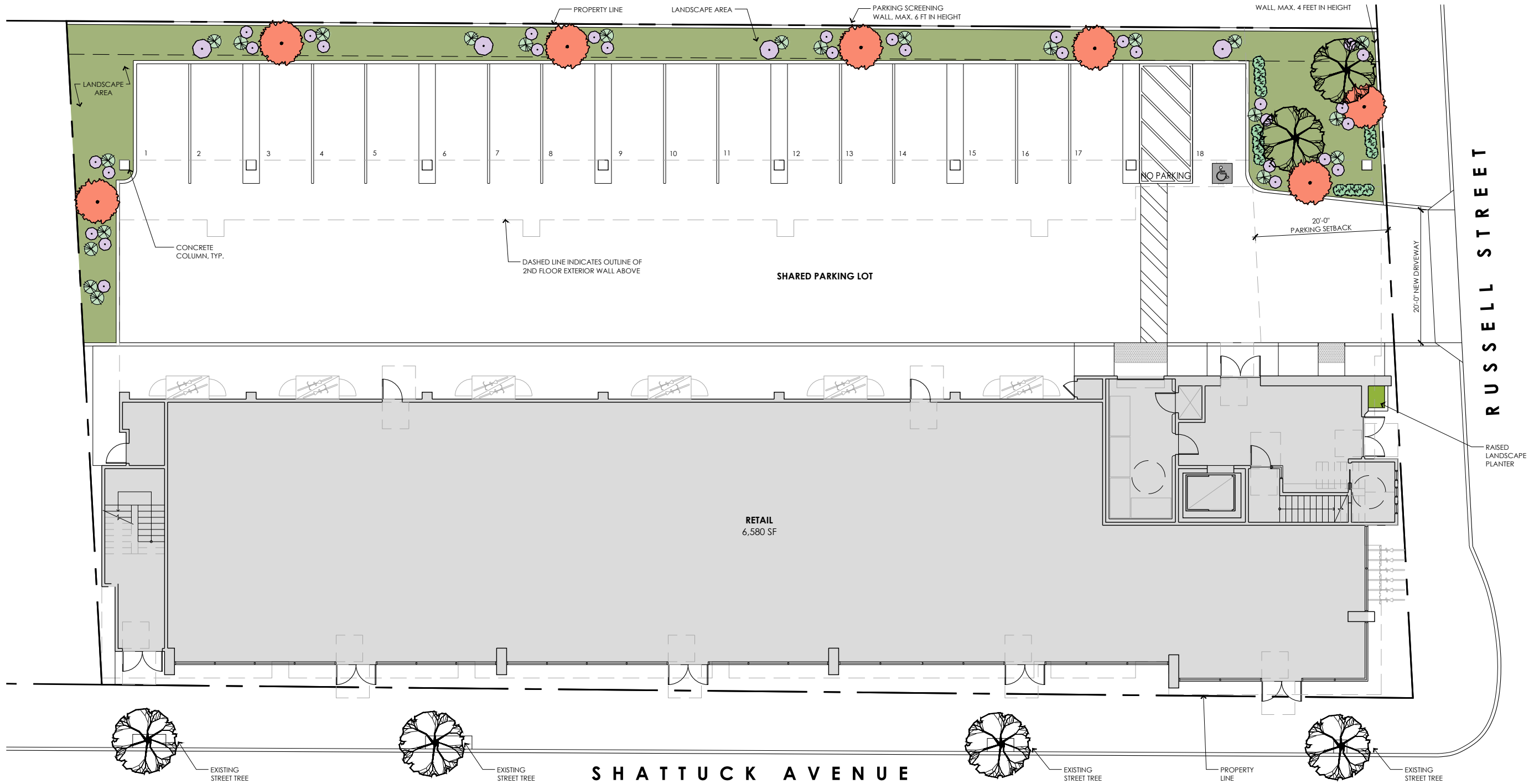
TOTAL USABLE OPEN SPACE 6,258 SF
LANDSCAPE AREA (40% OF 6,258) 2,503 SF

SITE LANDSCAPE AREA 1,660 SF
50% TREE CANOPY COVERAGE AT THE NEW SURFACE PARKING AREA.
TOTAL PARKING AREA 7,553
TREE CANOPY (50% OF 7,553) 3,777-3,670(BLDG. OVERHANG)
= 107 SF

GREEN ROOF LANDSCAPE AREA 1,545 SF

PLANTER LANDSCAPE AREA 642 SF

TOTAL 3,847 SF



LANDSCAPE PLAN - FIRST LEVEL

Arris
STUDIO ARCHITECTS

ADDRESS
1327 ARCHER STREET, SUITE 220
SAN LUIS OBISPO, CA 93401

CONTACT
805.547.2240
ARRIS-STUDIO.COM

THOMAS E. JESS ARCHITECT #27608
STEPHEN A. RIGOR ARCHITECT #C33672

ARCHITECT OF RECORD



A PROJECT FOR:
NX VENTURES
2343 STUART STREET
BERKELEY, CA 94704
510.692.2994
NX-VENTURES.COM

THE BERKELEY COLLECTION
COMMERCIAL | HOTEL | RESIDENTIAL
2801 ADELINE ST. & 2900 SHATTUCK AVE., BERKELEY, CA
SITE #2: 2900-2920 SHATTUCK AVENUE
LANDSCAPE PLAN - FIRST LEVEL
PROJECT NORTH
TRUE NORTH
1" = 1'-0"
1/16" = 1'-0"
1/16" SHEET SCALE: 1/16" = 1'-0"

DATE
JUNE 9, 2021
ARRIS PROJECT #
A19103
CITY OF BERKELEY APPLICATION #
ZP2020-0118
SHEET #

A3.70

LANDSCAPE NOTES

THE TREES AND SHRUBS DISPLAYED ON THIS PLAN ARE FOR REFERENCE ONLY. THE INTENT IS TO ENSURE THE LANDSCAPE ARCHITECT INCLUDES TREES AND SHRUBS THAT MEET THE REQUIREMENT FROM THE SPECIFIC PLAN AND THE CITY OF BERKELEY PLANNING REQUIREMENTS



SMALL/MEDIUM DECIDUOUS TREES: 5-GALLON MIN IN SIZE.



SMALL/MEDIUM ACCENT TREES: 15-GALLON MIN. IN SIZE



FRONTAGE TREES



SCREENING SHRUBS & COLORFUL PERENNIALS: COMBINATION OF 32" TO 42" TALL SHRUBS AND BERMED LANDSCAPING TO PROVIDE SCREENING OF PAVED PARKING AREAS FROM THE STREET.

LANDSCAPE LEGEND

LANDSCAPE AREA CALCULATION

TOTAL USABLE OPEN SPACE 6,258 SF
LANDSCAPE AREA (40% OF 6,258) 2,503 SF



SITE LANDSCAPE AREA 1,660 SF



GREEN ROOF LANDSCAPE AREA 1,545 SF



PLANTER LANDSCAPE AREA 642 SF

TOTAL 3,847 SF



ADDRESS
1327 ARCHER STREET, SUITE 220
SAN LUIS OBISPO, CA 93401

CONTACT
805.547.2240
ARRIS-STUDIO.COM

THOMAS E. JESS ARCHITECT #27608
STEPHEN A. RIGOR ARCHITECT #C33672

ARCHITECT OF RECORD



A PROJECT FOR:
NX VENTURES
2343 STUART STREET
BERKELEY, CA 94704
510.692.2994
NX-VENTURES.COM

THE BERKELEY COLLECTION
COMMERCIAL | HOTEL | RESIDENTIAL
2801 ADELINE ST. & 2900 SHATTUCK AVE. BERKELEY, CA
SITE #2: 2900-2920 SHATTUCK AVENUE
LANDSCAPE PLAN - 2ND LEVEL



DATE
JUNE 9, 2021
ARRIS PROJECT #
A19103
CITY OF BERKELEY APPLICATION #
2P2020-0118
SHEET #

A3.71

LANDSCAPE NOTES

THE TREES AND SHRUBS DISPLAYED ON THIS PLAN ARE FOR REFERENCE ONLY. THE INTENT IS TO ENSURE THE LANDSCAPE ARCHITECT INCLUDES TREES AND SHRUBS THAT MEET THE REQUIREMENT FROM THE SPECIFIC PLAN AND THE CITY OF BERKELEY PLANNING REQUIREMENTS



SMALL/MEDIUM DECIDUOUS TREES: 5-GALLON MIN IN SIZE.



SMALL/MEDIUM ACCENT TREES: 15-GALLON MIN. IN SIZE



FRONTAGE TREES



SCREENING SHRUBS & COLORFUL PERENNIALS: COMBINATION OF 32" TO 42" TALL SHRUBS AND BERMED LANDSCAPING TO PROVIDE SCREENING OF PAVED PARKING AREAS FROM THE STREET.

LANDSCAPE LEGEND

LANDSCAPE AREA CALCULATION

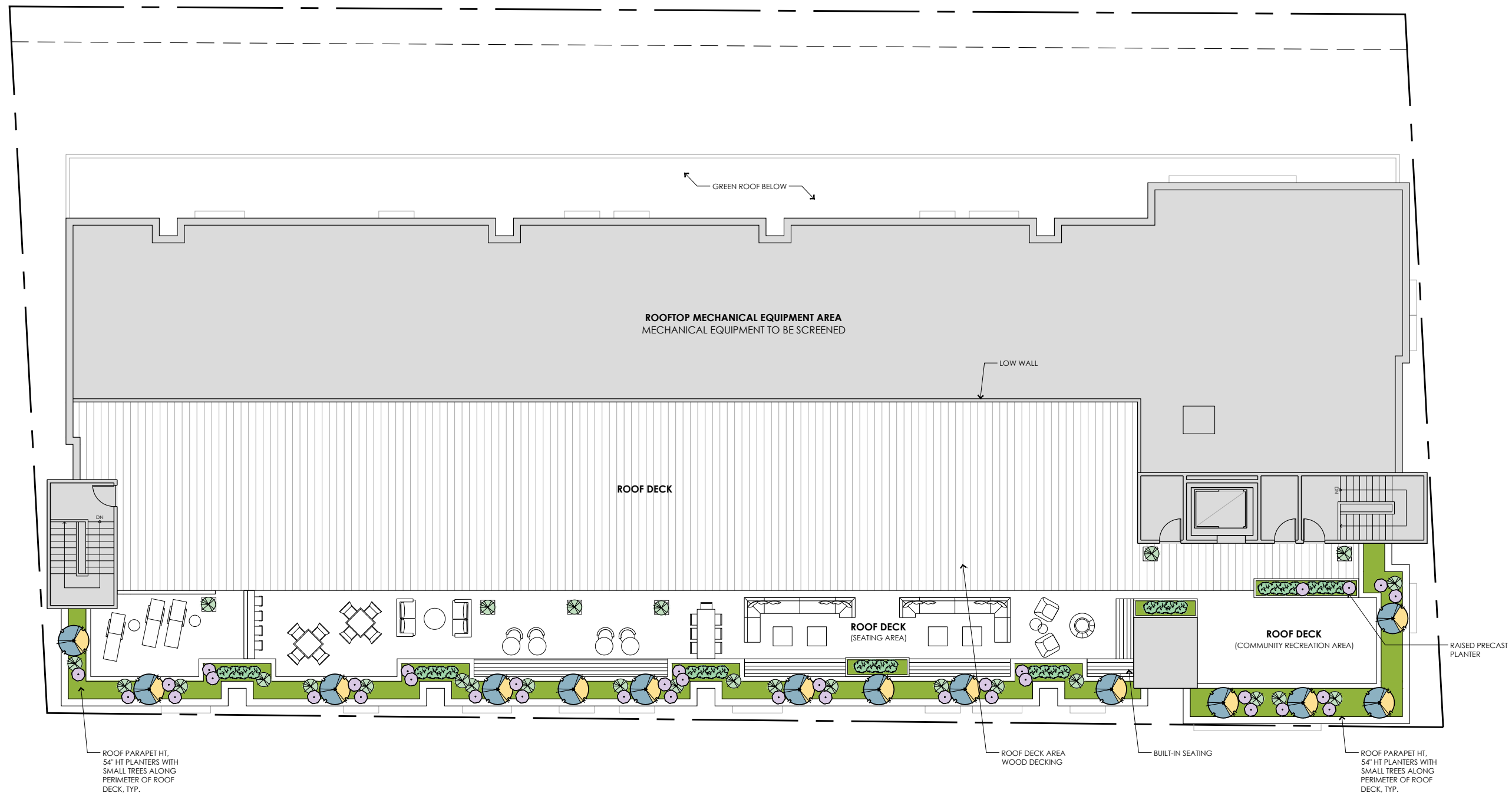
TOTAL USABLE OPEN SPACE 7,898 SF
LANDSCAPE AREA (40% OF 7,898) 3,160 SF

SITE LANDSCAPE AREA 1,660 SF

GREEN ROOF LANDSCAPE AREA 1,545 SF

PLANTER LANDSCAPE AREA 642 SF

TOTAL 3,847 SF



LANDSCAPE PLAN - ROOF DECK



ADDRESS
1327 ARCHER STREET, SUITE 220
SAN LUIS OBISPO, CA 93401
CONTACT
805.547.2240
ARRIS-STUDIO.COM
THOMAS E. JESS ARCHITECT #27608
STEPHEN A. RIGOR ARCHITECT #C33672
ARCHITECT OF RECORD



A PROJECT FOR:
NX VENTURES
2343 STUART STREET
BERKELEY, CA 94704
510.692.2994
NX-VENTURES.COM

THE BERKELEY COLLECTION
COMMERCIAL | HOTEL | RESIDENTIAL
2801 ADELIN ST. & 2900 SHATTUCK AVE. BERKELEY, CA
SITE #2: 2900-2920 SHATTUCK AVENUE
LANDSCAPE PLAN - ROOF

DATE
JUNE 9, 2021
ARRIS PROJECT #
A19103
CITY OF BERKELEY APPLICATION #
ZP2020-0118
SHEET #

A3.72

WELO
Water Budget and Water Use Calculator

INSTRUCTIONS:

1. Enable macros.
2. Enter values in blue cells. Gray cells will automatically fill.
3. For ETo, refer to Appendix A of the ordinance, available here: <https://www.water.ca.gov/Programs/Water-Use-And-Efficiency/Urban-Water-Use-Efficiency>
4. Print this sheet and submit with Landscape Document Package for the Comprehensive Performance Compliance Pathway.

Date:	5/21/2021
Project Name:	2900 Shattuck, Berkeley CA
Project Contact:	Steve Rigor
Project Contact Email:	srigor@arris-studio.com

Maximum Applied Water Allowance (MAWA)	Project Type	ETo	ETAF	Special Landscape Area (SLA)	Total Landscape Area including SLA	MAWA (gal/yr)
	Non-residential	41.8	0.45	-	3,847	44,864

MAWA = (ETo) * (0.62) * [(ETAF * LA) + ((1 - ETAF) * SLA)]

Estimated Total Water Use (ETWU)	ETo	(SF * PF) / IE	SLA	ETWU (gal/yr)
	41.8	1,565	-	40,551

ETWU = (ETo) * (0.62) * [(PF * SF) / IE + SLA]

Difference between MAWA and ETWU: 4,314 **Project meets water budget.**

ETWU Calculation (Regular landscape areas)	Zone #	Description	Select Irrigation	Square Feet (SF)	Plant Factor (PF)	Irrigation Efficiency (IE)	(SF * PF) / IE
	1	Parking Area	Drip	1,660	0.50	0.81	1,025
	2	Green Roof	Drip	1,545	0.20	0.81	381
	3	Planter	Drip	642	0.20	0.81	159
	4						-
	Landscape area (not including SLA)			3,847			1,565

ETWU Calculation Special Landscape Areas (SLA)	Description	Square Feet (SF)	Plant Factor / Irrigation Efficiency (PF/IE)	(SF * PF) / IE
	Edible planting area	0	1.0	-
	Multi-use and sports field turf area	0	1.0	-
	Area irrigated with recycled water	0	1.0	-
	Pool	0	1.0	-
	Total SLA	0		0

Total Landscape Area (including SLA) from ETWU Calculation	3,847
---	--------------

Plant Legend Template *

Quantity	Symbol	Botanical Name	Common Name	Size	Plant Factor ¹	Reference ¹	Adjacent to Obstruction?	Mature Spread ²	Invasive ³
Trees									
1	T	Olea Europaea	Olive	5 Gal	Very Low	WUCOLS		Per Plan	No
1	T	Aesculus California	California Buckeye	15 Gal	Very Low	WUCOLS		Per Plan	No
1	T	Arctostaphylos Manzanita	Common Manzanita	15 Gal	Very Low	WUCOLS		Per Plan	No
1	T	Chilopsis Linearis	Deser Willow	5 Gal	Very Low	WUCOLS		Per Plan	No
1	T	Laurus 'Saratoga'	Saratoga Laurel	15 Gal	Low	WUCOLS		Per Plan	No
1	T	Callistemon Citrinus	Bottle Brush	5 Gal	Low	WUCOLS		Per Plan	No
Shrubs									
1	S	Alyogyne Huegelii	Blue Hibiscus	5 Gal	Low	WUCOLS		Per Plan	No
1	S	Hunnemannia Fumariifolia	Mexican Tulip Poppy	5 Gal	Low	WUCOLS		Per Plan	No
1	S	Arctostaphylos Hookeri	Manzanita (Shrub cvs.)	5 Gal	Low	WUCOLS		Per Plan	No
1	S	Ribes sanguineum varieties & cultivars	Red Flowering Currant	5 Gal	Low	WUCOLS		Per Plan	No
1	S	Pittosporum Tobira and Cvs.	Mock Orange	5 Gal	Moderate	WUCOLS		Per Plan	No
Ground-cover									
1	G	Ceanothus 'Centennial'	Centennial ceanothus	1 Gal	Low	WUCOLS		Per Plan	No
1	G	Thymus spp. and cvs.	Thyme	Flat	Low	WUCOLS		Per Plan	No
1	G	Eriogonum fasciculatum 'Theodore	Theodore Payne buckwheat	1 Gal	Low	WUCOLS		Per Plan	No
Total Plants									
13									

¹ From Water Use Classification of Landscape Species (WUCOLS) published by the University of California Cooperative Extension and California Department of Water Resources (DWR) or other sources approved by DWR.

Plant Factors:

- Very low water use = 0 to 0.1
- Low water use = 0.1 to 0.4
- Moderate water use = 0.4 to 0.6
- High water use = 0.6 to 1.0

² This is the spread of each mature plant as drawn on the project plans.

³ WELO strongly discourages the use of invasive plant species. Resources for identifying invasive plants include Cal-IPC's Don't Plant a Pest brochure series and the California Invasive Plant Inventory Database (www.cal-ipc.org).

*This Plant Legend Template is adapted from the Bay-Friendly Landscape Scorecard.

WATER CONSERVATION

WATER CONSERVATION NOTES

THE FOLLOWING WATER CONSERVATION TECHNIQUES SHALL BE EMPLOYED IN THIS PROJECT:

- WATER CONSERVING PLANTS, DEFINED AS "LOW" OR "VERY LOW" IN THE "WATER USE CLASSIFICATION OF LANDSCAPE SPECIES" (WUCOLS IV, UNIVERSITY OF CALIFORNIA COOPERATIVE EXTENSION), SHALL BE UTILIZED.
- IRRIGATION SYSTEM SHALL BE SEPARATED INTO DISTINCT HYDROZONES BASED ON PLANT MATERIAL TYPES, EXPOSURE, AND ORIENTATION.
- SOIL AMENDMENTS AND A 3" LAYER OF MEDIUM BARK MULCH SHALL BE UTILIZED TO IMPROVE WATER HOLDING CAPACITY OF SOIL AND INHIBIT EVAPORATION.
- LAWN IS NOT USED.

STATEMENT OF WATER CONSERVING IRRIGATION DESIGN THE FOLLOWING PRINCIPLES OF IRRIGATION DESIGN UTILIZED ON THIS PROJECT ARE DIRECTED SPECIFICALLY AS CONSERVING WATER AND IMPROVING THE EFFICIENCY OF THE IRRIGATION SYSTEM.

- ALL IRRIGATION SHALL BE DRIP OR DRIP-TYPE AND/OR MICROSPRAY SYSTEMS ONLY. LOW PRECIPITATION RATE HEADS TO BE USED TO MINIMIZE RUNOFF.
- IRRIGATION HYDROZONES SHALL ADJUST ACCORDING TO WATER NEEDS AND WEATHER.
- UTILIZATION OF IRRIGATION SYSTEM MASTER VALVE.
- UTILIZATION OF IRRIGATION SYSTEM "SMART CONTROLLER" WITH WATER BUDGETING FEATURE.
- UTILIZATION OF IRRIGATION SYSTEM FLOW SENSOR.
- UTILIZATION OF RAIN SHUT-OFF DEVICE CONNECTED TO IRRIGATION CONTROLLER.



ADDRESS
1327 ARCHER STREET, SUITE 220
SAN LUIS OBISPO, CA 93401

CONTACT
805.547.2240
ARRIS-STUDIO.COM

THOMAS E. JESS ARCHITECT #27408
STEPHEN A. RIGOR ARCHITECT #C33672

ARCHITECT OF RECORD



A PROJECT FOR:
NX VENTURES
2343 STUART STREET
BERKELEY, CA 94704
510.692.2994
NX-VENTURES.COM

THE BERKELEY COLLECTION
COMMERCIAL | HOTEL | RESIDENTIAL
2801 ADELIN ST. & 2900 SHATTUCK AVE., BERKELEY, CA

SITE #2: 2900-2920 SHATTUCK AVENUE
WATER USE CALCULATIONS
AND PLANT PALETTE

DATE
JUNE 9, 2021

ARRIS PROJECT #
A19103

CITY OF BERKELEY APPLICATION #
2P2020-0118

SHEET #

A3.73